

2014

MARKIZE



TEHNIČNE KARAKTERISTIKE

MALTA



VGRAJEVANJE STAVBNEGA POHIŠTVA IN PROJEKTIRANJE

GREGOR JEZERNIK s.p., TRBONJE 30, 2371 TRBONJE,

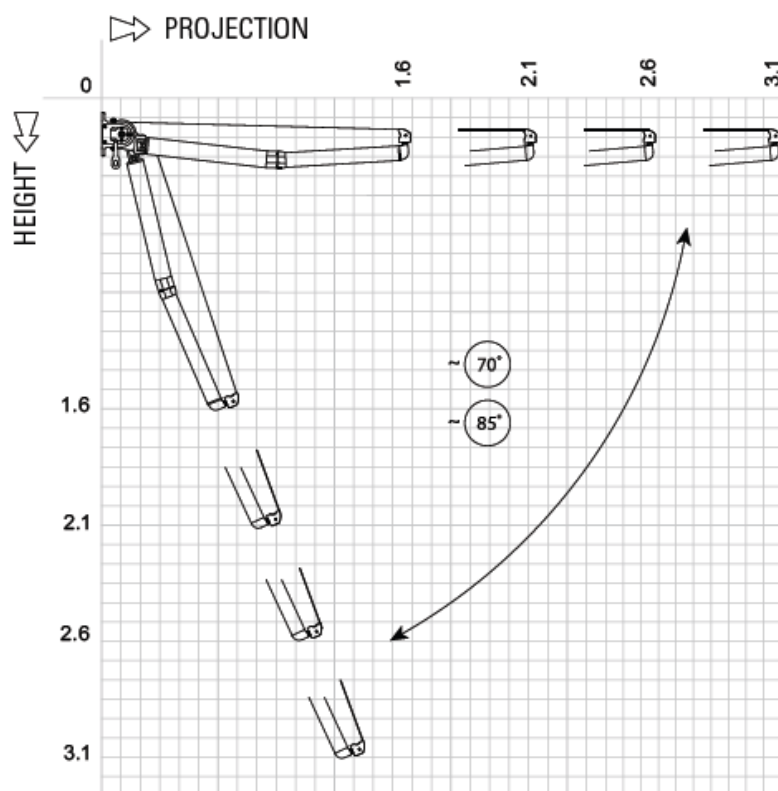
info@alusvet.si, 051 899 427, ID:SI47567236

M.št:3787486000 PR(IBAN):SI56 0254 6025 8828 484 SWIFT:LJBASI2X

MALTA je lahka, prostoviseča markiza idealna za senčenje majhnih teras ali balkonov.

- Njena kompaktna konstrukcija je sestavljena iz univerzalne stenske in stropne konzole, ki omogoča hitro in enostavno montažo in omogoča nastavitev kota tudi do 85°.
- Roke so izvedene z verižno povezavo, kar prinaša zanesljivost in trajnost delovanja.
- Deli so prašno lakirani v petih standardnih barvah

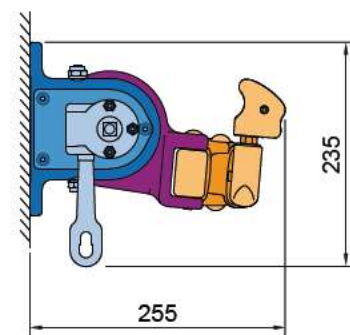
Projection	1,6m; 2,1m; 2,6 m; 3,1 m
Maximum projection	3,1 m
Maximum width	5,0 m
Minimum width	projection + 0,3 m
Arms	folding, aluminium, with springs and a plate link chain; levelling of folded arms
Tilt angle	5° ~ 70° (mounting to the wall) 5° ~ 85° (mounting to ceiling)
Installing brackets	wall, ceiling
Roller tube diameter	70 mm and 80 mm
Optional hood	no
Construction colour	white, graphite, silver + graphite, beige, brown – powder laquered
Fabric	over 100 patterns
Valance	height 21cm (±0,5cm), shape by template
Hand operation	hand crank 1,5 m; 1,8 m; 2,2 m
Automatic drive	motor, motor with an override, remote control, wind-sun weather control



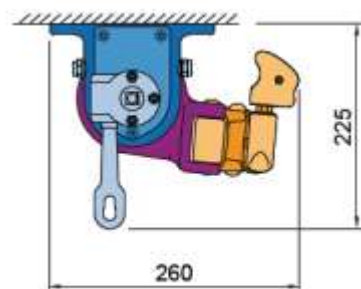
Tilt angle adjustment for an awning:

5° ~ 70° (mounting to the wall)

5° ~ 85° (mounting to ceiling)



Installation to a wall



Installation to a ceiling

SILVER PLUS



VGRAJEVANJE STAVBNEGA POHIŠTVA IN PROJEKTIRANJE

GREGOR JEZERNIK s.p., TRBONJE 30, 2371 TRBONJE,

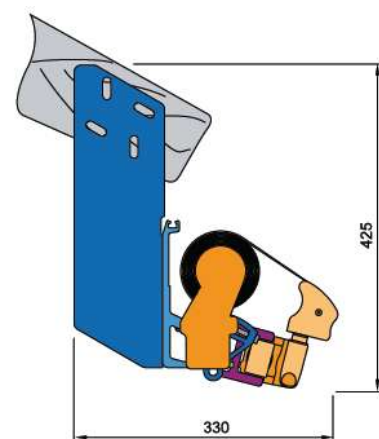
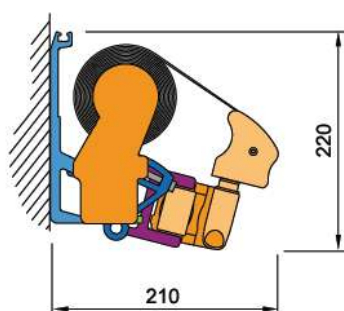
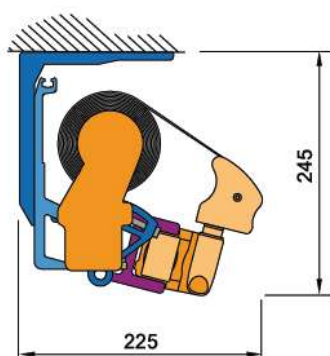
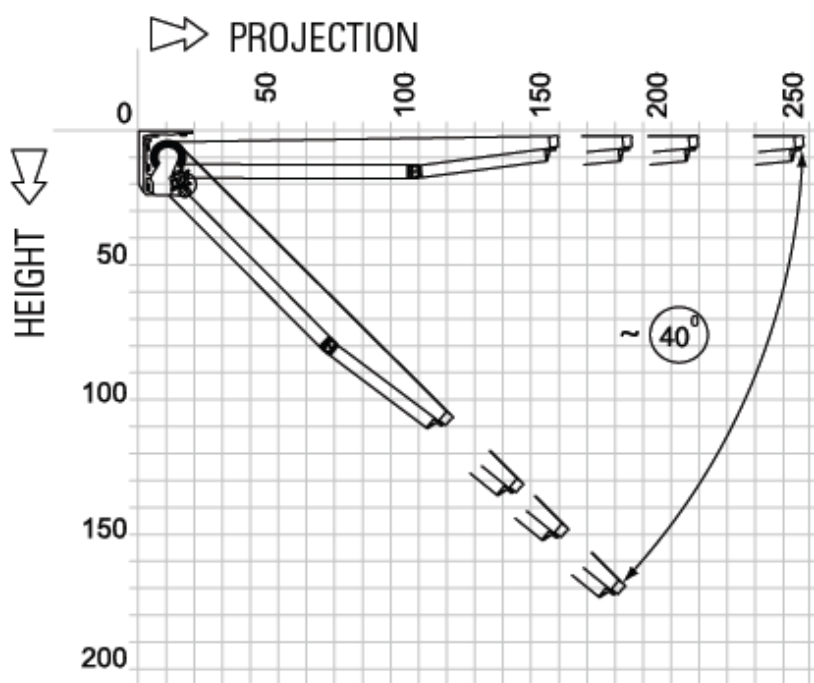
info@alusvet.si, 051 899 427, ID:SI47567236

M.št:3787486000 PR(IBAN):SI56 0254 6025 8828 484 SWIFT:LJBAS12X

SILVER PLUS je lahka, prostoviseča markiza idealna za senčenje srednjih teras ali balkonov.

- Roke so pritrjene na močan prečni nosilec, ki je pritrjen na steno ali strop z nosilnimi konzolami.
- Roke so izvedene z verižno povezavo, kar prinaša zanesljivost in trajnost delovanja.
- Deli so prašno lakirani v beli standardni barvi.
- Kot se lahko nastavi od 5-40°.

Projection	1,6m; 1,9 m; 2,2 m; 2,5 m
Maximum projection	2,5 m
Maximum width	5,3 m
Minimum width	projection + 0,4 m; in case of overlapping arms the min. width is the projection minus 0,4 m
Arms	folding, aluminium, with springs and a plate link chain
Tilt angle	5° – 40°
Installing brackets	wall, ceiling, rafter
Roller tube diameter	70 mm and 80 mm
Optional hood	yes
Construction colour	white, powder lacquered
Fabric	over 100 patterns
Valance	height 21cm (±0,5cm), shape by template
Hand operation	hand crank 1,5 m; 1,8 m; 2,2 m
Automatic drive	motor, motor with an override, remote control, wind-sun weather control



AUSTRALIA



VGRAJEVANJE STAVBNEGA POHIŠTVA IN PROJEKTIRANJE

GREGOR JEZERNIK s.p., TRBONJE 30, 2371 TRBONJE,

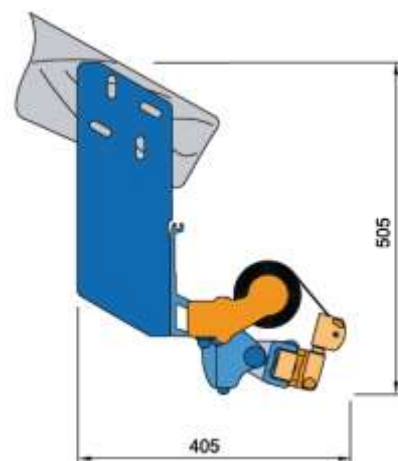
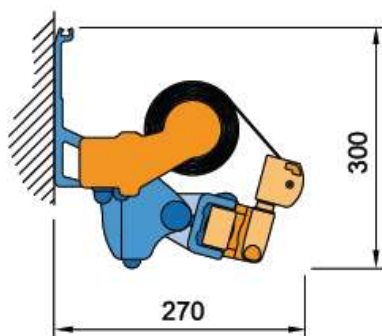
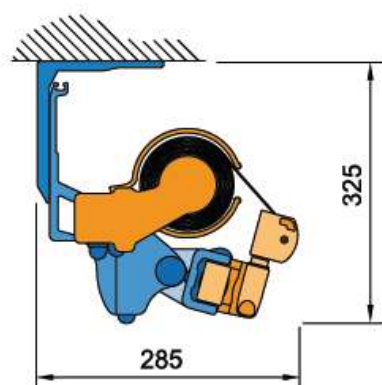
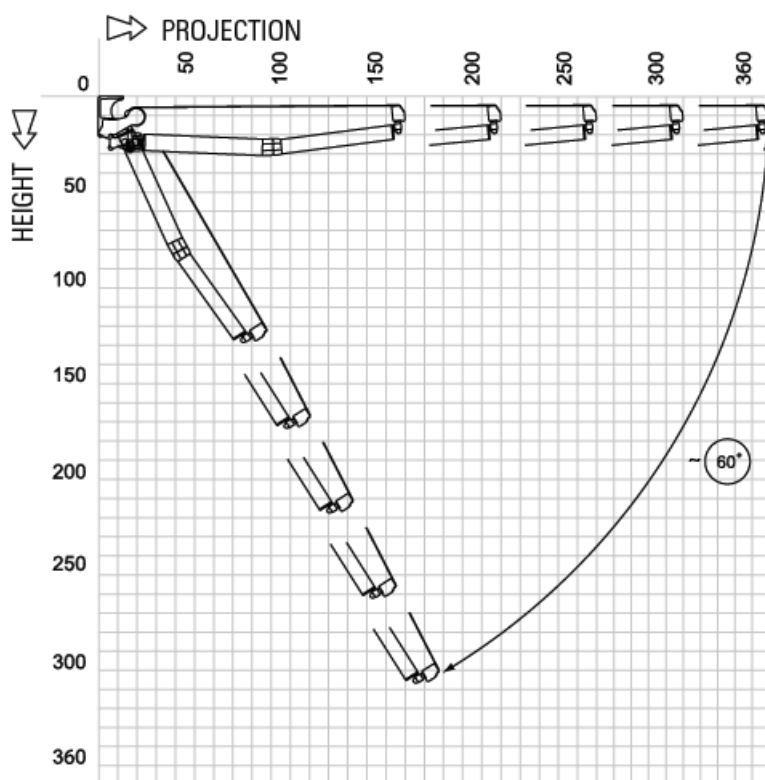
info@alusvet.si, 051 899 427, ID:SI47567236

M.št:3787486000 PR(IBAN):SI56 0254 6025 8828 484 SWIFT:LJBASI2X

AUSTRALIA je enostavna, prostoviseča markiza idealna za senčenje velikih teras in tudi za javno uporabo.

- Roke so pritrjene na močan prečni nosilec, ki je pritrjen na steno ali strop z nosilnimi konzolami.
- Roke so izvedene z verižno povezavo, kar prinaša zanesljivost in trajnost delovanja.
- Deli so prašno lakirani v petih standardnih barvah.
- Kot se lahko nastavi od 5-60°.
- V sredini se lahko uporabi valjčni nosilec, ki zmanjša povprečno napetost markize.

Projection	1,6 m; 2,1 m; 2,6 m; 3,1 m; 3,6 m
Maximum projection	3,6 m
Maximum width	7 m
Minimum width	projection + 0,35 m; in case of overlapping arms the min. width is the projection minus 0,4 m
Arms	folding, aluminium, with springs and a plate link chain; levelling of folded arms
Tilt angle	5° ~ 60°
Optional installing brackets	wall, ceiling, rafter
Roller tube diameter	70 mm and 80 mm
Construction colour	white, graphite, silver + graphite, beige, brown – powder laquered
Fabric	over 100 patterns
Valance	height 21cm (±0,5cm), shape by template
Hand operation	hand crank 1,5 m; 1,8 m; 2,2 m
Automatic drive	motor, motor with an override, remote control, wind-sun weather control



JAMAICA



VGRAJEVANJE STAVBNEGA POHIŠTVA IN PROJEKTIRANJE

GREGOR JEZERNIK s.p., TRBONJE 30, 2371 TRBONJE,

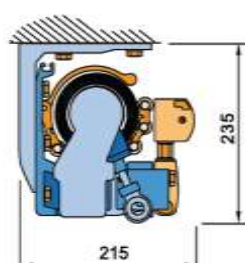
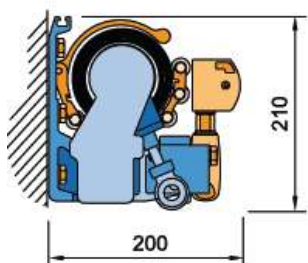
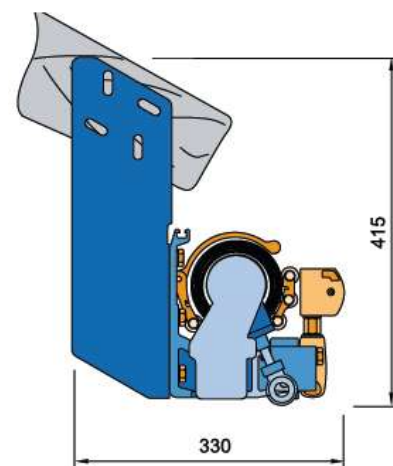
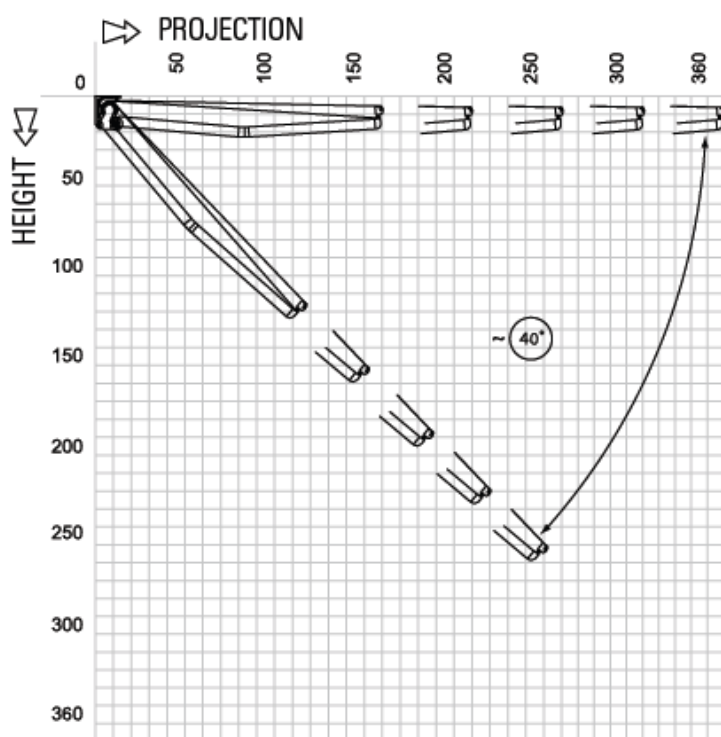
info@alusvet.si, 051 899 427, ID:SI47567236

M.št:3787486000 PR(IBAN):SI56 0254 6025 8828 484 SWIFT:LJBASI2X

JAMAICA združuje moč in eleganco. Njena konstrukcija zagotavlja visoko zanesljivost delovanja tudi v najtežjih pogojih velikih teras in javnih prostorov.

- Roke so pritrjene na močan prečni nosilec, ki je pritrjen na steno ali strop z nosilnimi konzolami.
- Roke so izvedene z verižno povezavo, kar prinaša zanesljivost in trajnost delovanja.
- Deli so prašno lakirani v petih standardnih barvah.
- Kot se lahko nastavi od 5-40°.
- V sredini se lahko uporabi valjni nosilec, ki zmanjša povprečno napetost markize.
- Kot opcija je mogoče zaščititi navito platno s strešnim profilom.

Projection	1,6 m; 2,1 m; 2,6 m; 3,1 m; 3,6 m; 4,1 m
Maximum projection	4,1 m
Maximum width	7 m
Minimum width	projection + 0,5 m; in case of overlapping arms the min. width is the projection minus 0,4 m
Arms	folding, aluminium, with springs and a plate link chain; levelling of folded arms
Tilt angle	5° ~ 40°
Optional installing brackets	wall, ceiling, rafter
Roller tube diameter	70 mm and 80 mm
Optional hood	yes
Construction colour	white, graphite, silver+ graphite, beige, brown – powder laquered
Fabric	over 100 patterns
Valance	height 21cm (±0,5cm), shape by template
Hand operation	hand crank 1,5 m; 1,8 m; 2,2 m
Automatic drive	motor, motor with override, remote control, wind-sun weather control



PALLADIO



VGRAJEVANJE STAVBNEGA POHIŠTVA IN PROJEKTIRANJE

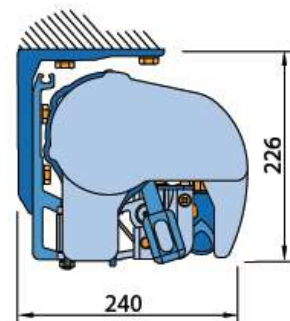
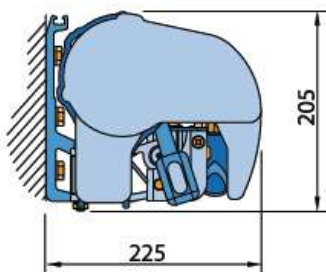
GREGOR JEZERNIK s.p., TRBONJE 30, 2371 TRBONJE,

info@alusvet.si, 051 899 427, ID:SI47567236

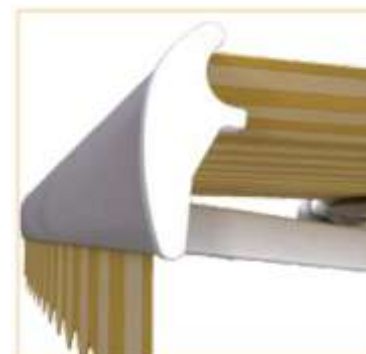
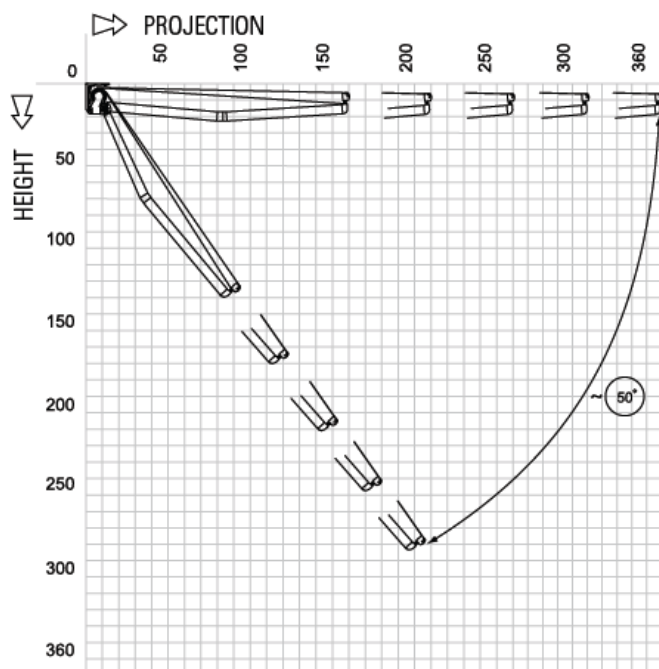
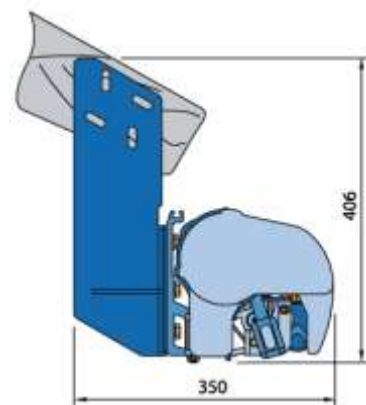
M.št:3787486000 PR(IBAN):SI56 0254 6025 8828 484 SWIFT:LJBASI2X

PALLADIO je elegantna kasetna tenda, ki deluje perfektno na terasah.

- Posebna konstrukcija konzol omogoča dviganje rok in zapiranje sprednjega profila tesno na omarico in s tem zapira navito platno.
- Roke so izvedene z verižno povezavo, kar prinaša zanesljivost in trajnost delovanja.
- Deli so prašno lakirani v petih standardnih barvah.
- Kot se lahko nastavi od 5-50°.



Projection	1,6 m; 2,1 m; 2,6 m; 3,1 m; 3,6 m
Maximum projection	3,6 m
Maximum width	7 m
Minimum width	projection + 0,5 m
Arms	folding, aluminium, with springs and a plate link chain, levelling of folded arms
Tilt angle	5° - 50°
Optional installing brackets	wall, ceiling, rafter
Roller tube diameter	70 mm
Cassette	with a gasket
Construction colour	white, graphite, beige, silver+graphite, brown – powder laquered
Fabric	over 100 patterns
Valance	height 21cm (±0.5cm), shape by template
Hand operation	hand crank 1,5 m; 1,8 m; 2,2 m
Automatic drive	motor, motor with override, remote control, wind-sun weather control; motor with electronic stops recommended



DAKAR



VGRAJEVANJE STAVBNEGA POHIŠTVA IN PROJEKTIRANJE

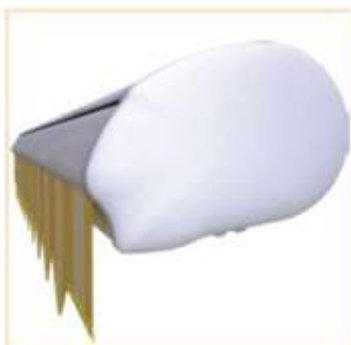
GREGOR JEZERNIK s.p., TRBONJE 30, 2371 TRBONJE,

info@alusvet.si, 051 899 427, ID:SI47567236

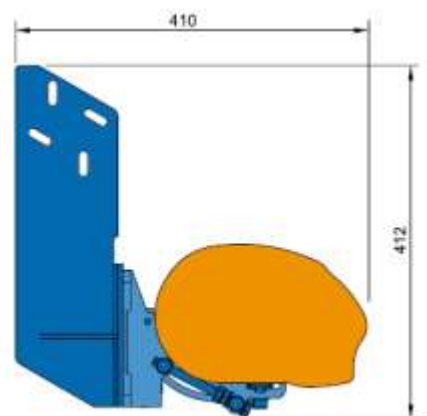
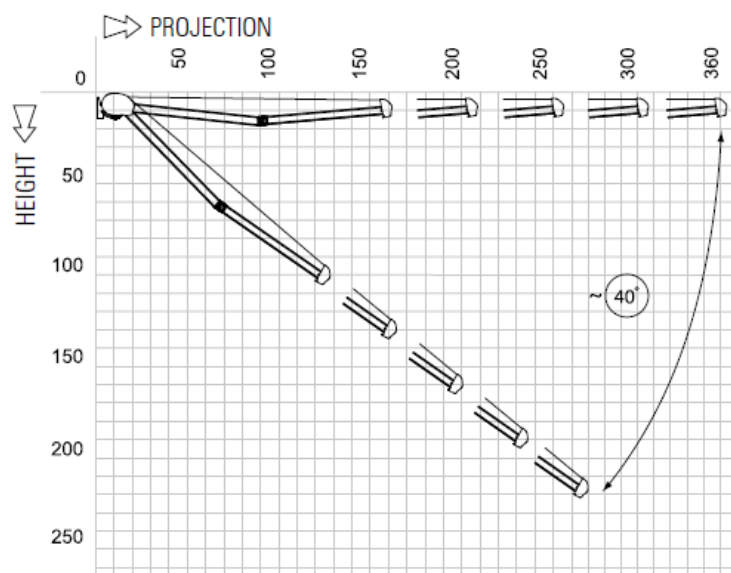
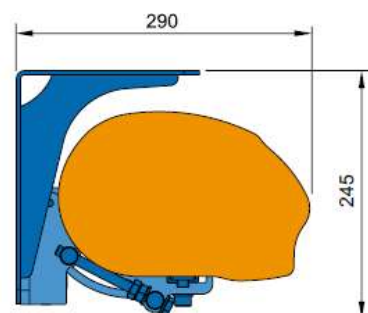
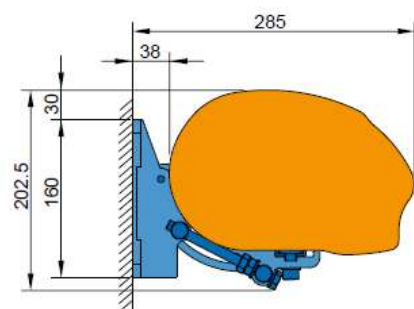
M.št:3787486000 PR(IBAN):SI56 0254 6025 8828 484 SWIFT:LJBASI2X

DAKAR je perfektna za senčenje velikih teras.

- Konstrukcija je kompletno skrita v omarici, kar poveča eleganco markize in tudi zaščito delov in platna.
- Roke so izvedene z verižno povezavo, kar prinaša zanesljivost in trajnost delovanja.
- Deli so prašno lakirani v petih standardnih barvah.
- Kot se lahko nastavi od 5-40°.



Projection	1,6 m; 2,1 m; 2,6 m; 3,1 m; 3,6 m
Maximum projection	3,6 m
Maximum width	6 m
Minimum width	projection + 0,5 m
Arms	folding, aluminium, with springs and a plate link chain, levelling of folded arms
Tilt angle	5° – 40°
Optional installing brackets	wall, ceiling, rafter
Roller tube diameter	80 mm
Cassette	with a gasket
Construction colour	white, graphite, silver + graphite, beige, brown – powder laquered
Fabric	over 100 patterns
Valance	height 21 cm (±0,5 cm), shaped by template
Hand operation	hand crank 1,5 m; 1,8 m; 2,2 m
Automatic operation	motor, motor with override, remote control, wind-sun weather control; motor with electronic stops recommended





POLEG PRIKAZANEGA IZDELUJEMO TUDI:

**ALU NADSTREŠKE
ALU ZIMSKE VRTOVE
ALU OGRAJE
ALU DVORIŠČNA DRSNA VRATA
ALU STAVBNO POHIŠTVO
SENČILA**